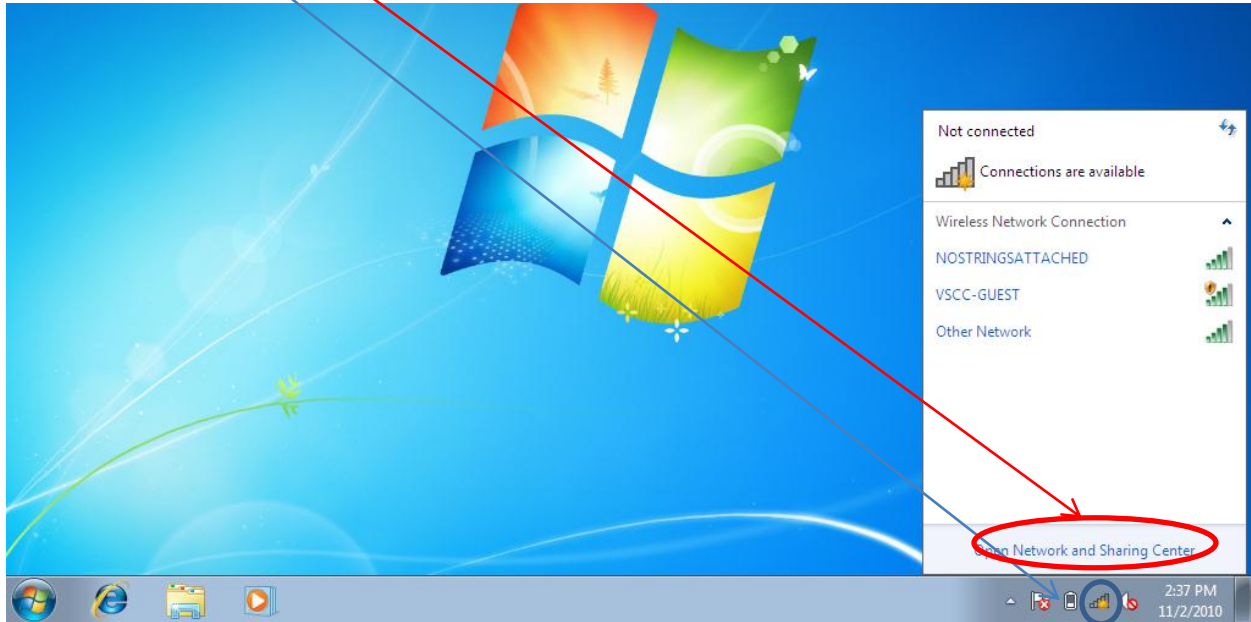
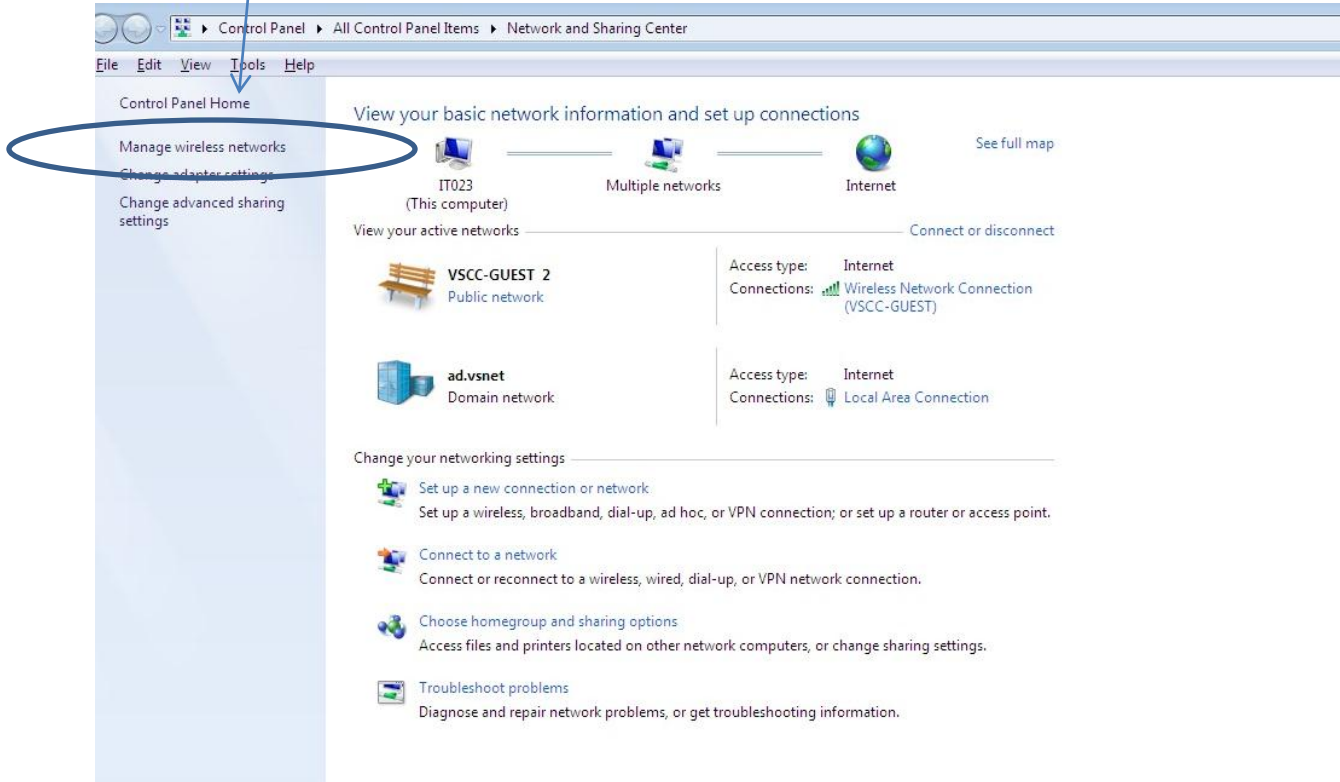


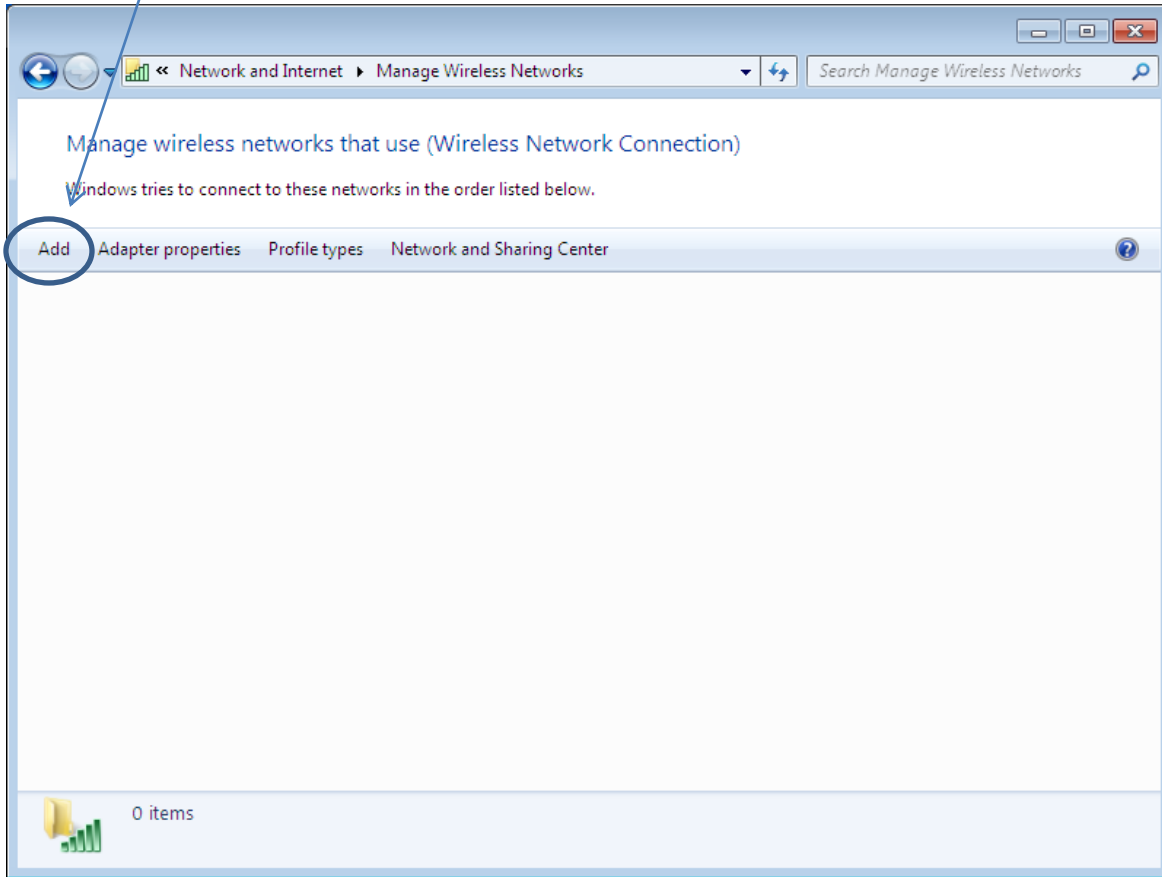
1. Right click the wireless icon to get started.
2. Click on "open network and sharing center"



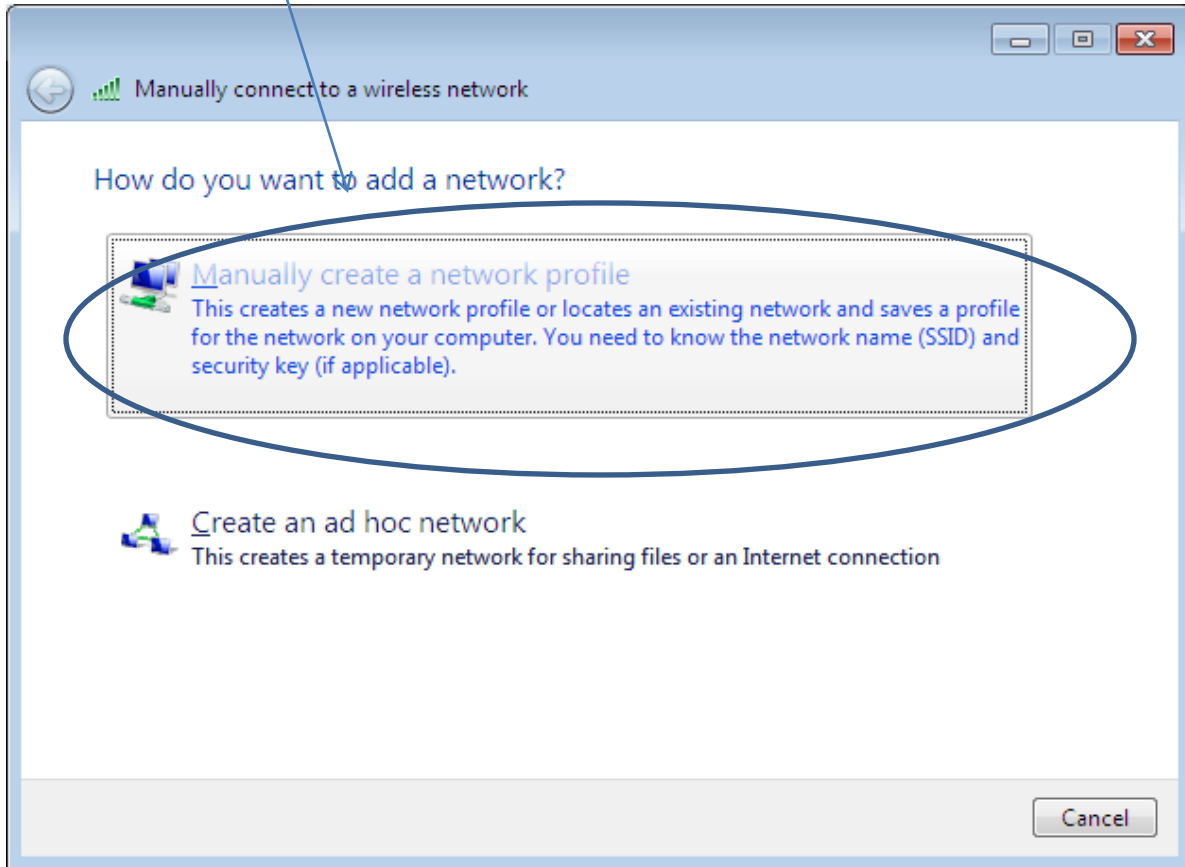
1. Click on "Manage wireless networks"



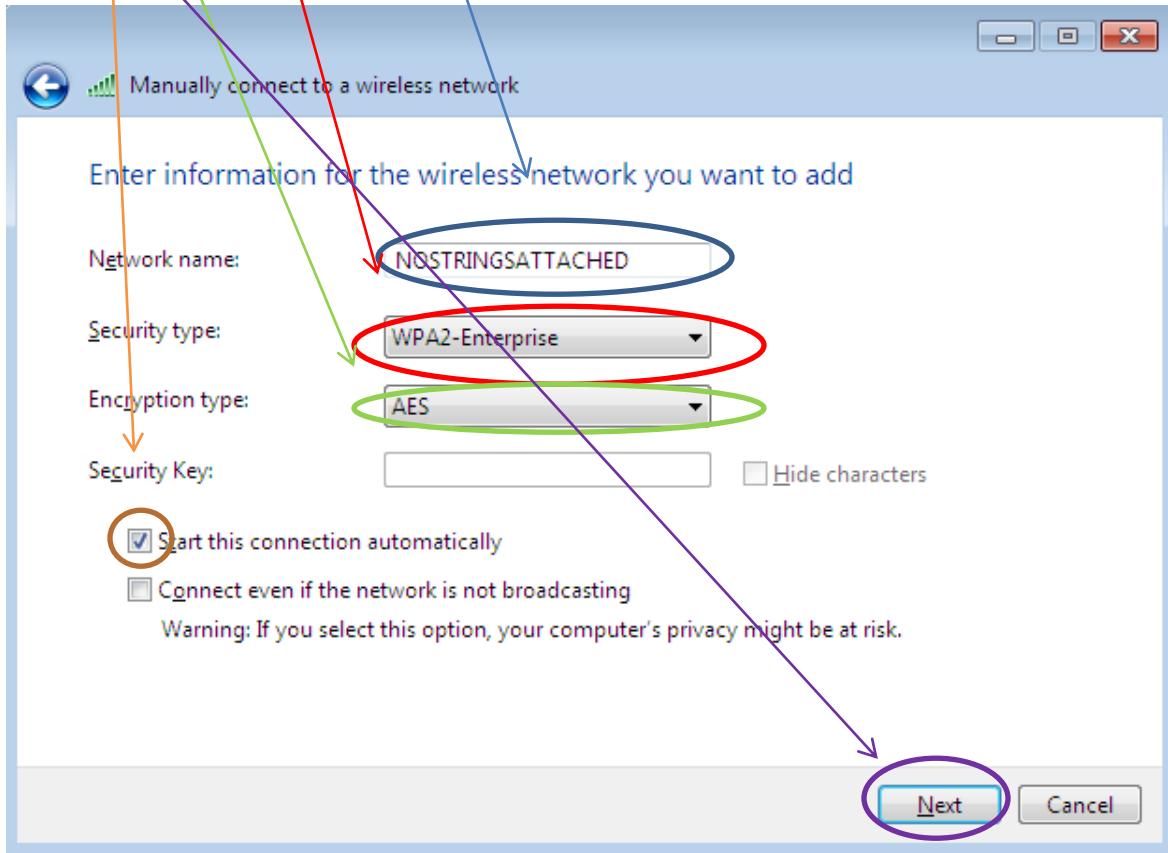
1. Select "add"



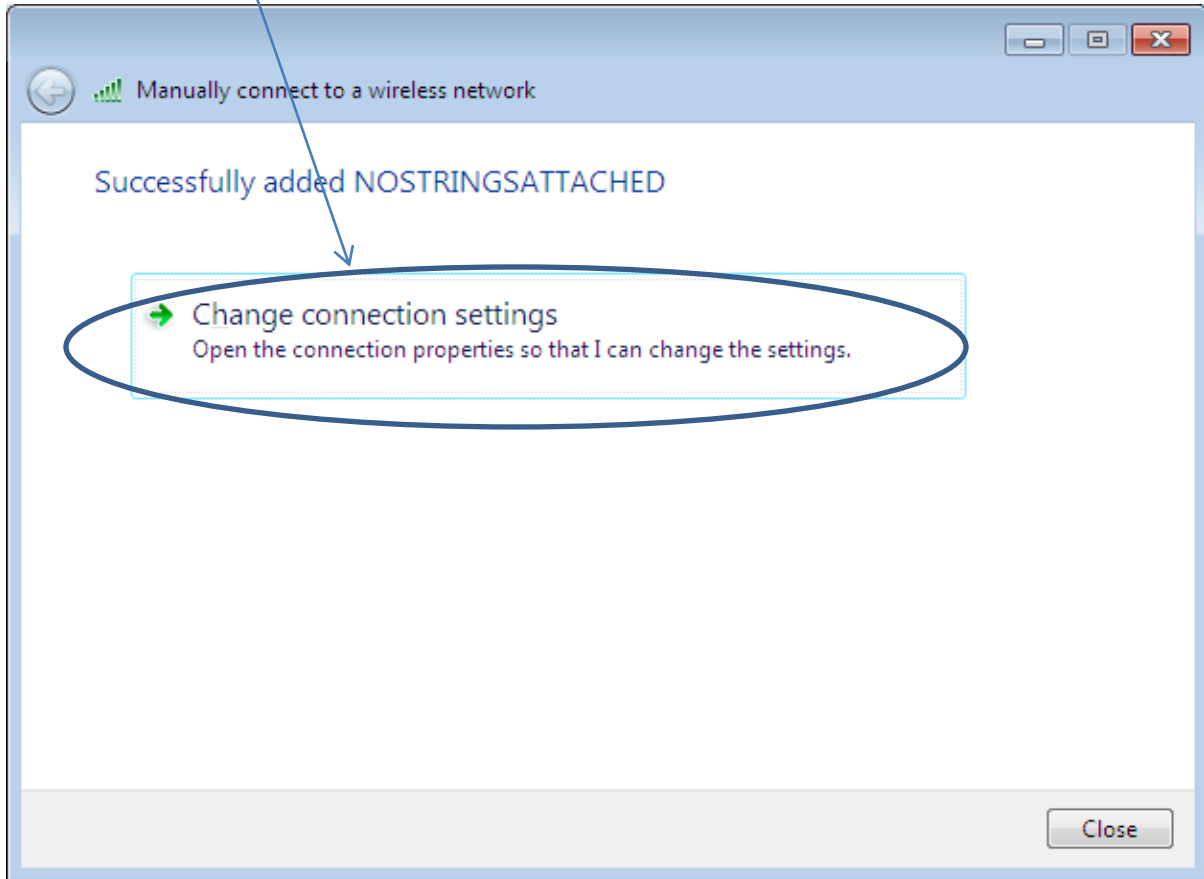
1. Select "manually create a network profile"



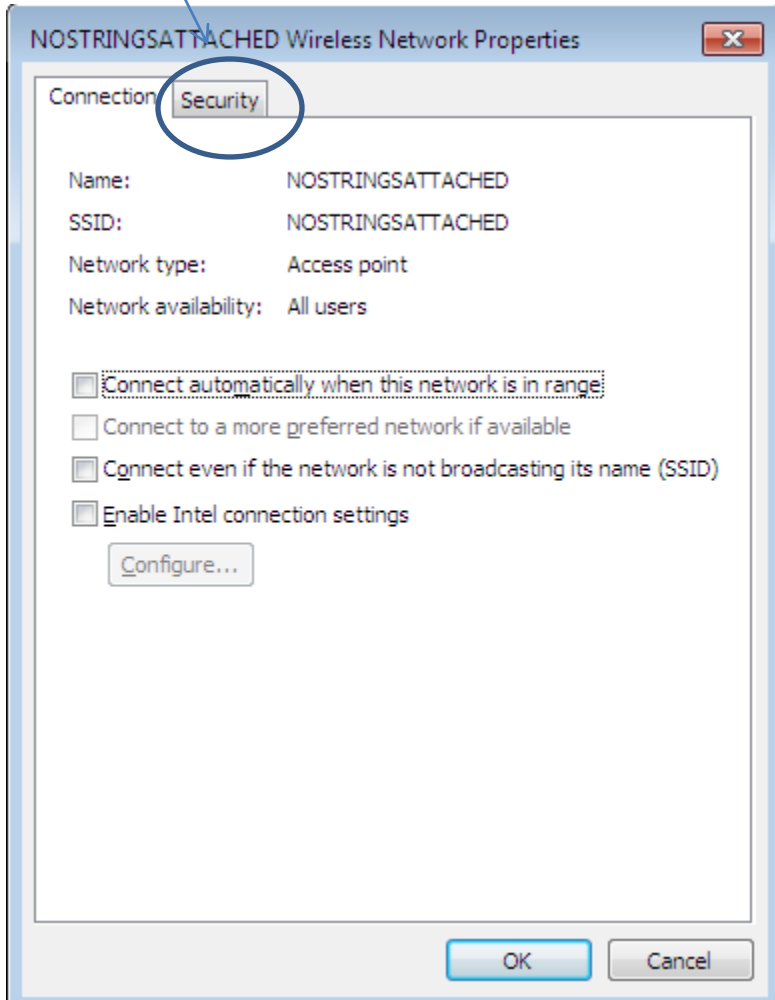
1. Type NOSTRINGSATTACHED
2. Select "WPA2-Enterprise"
3. Select AES
4. Check "Start this connection automatically"
5. Select "Next"



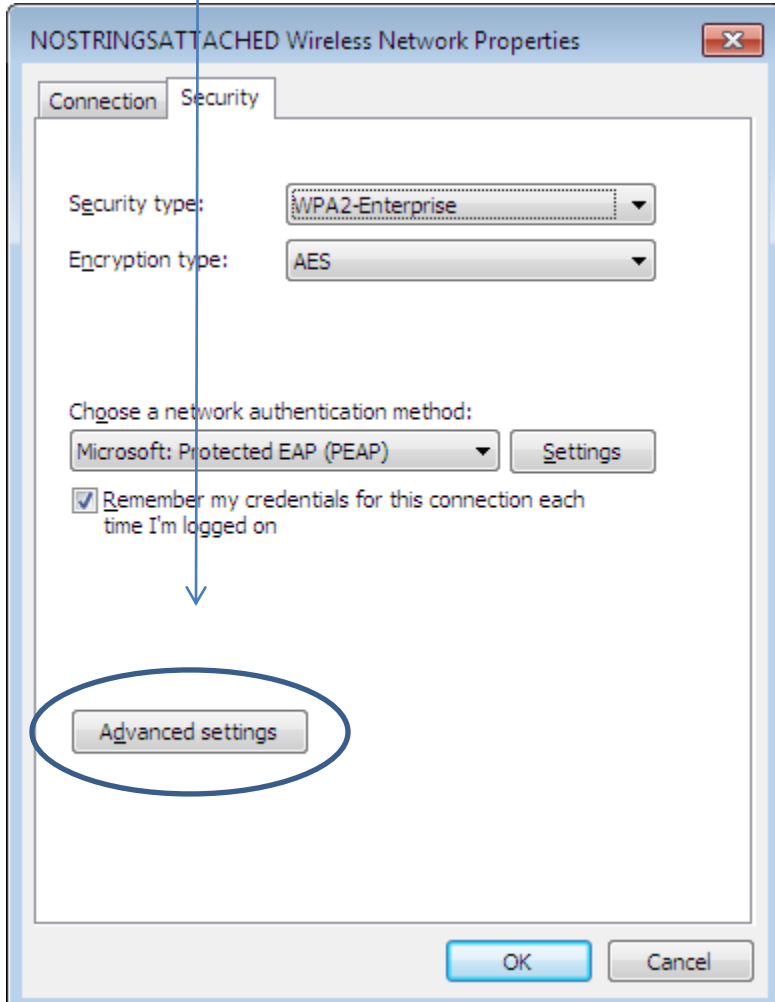
1. Select "Change connection settings"



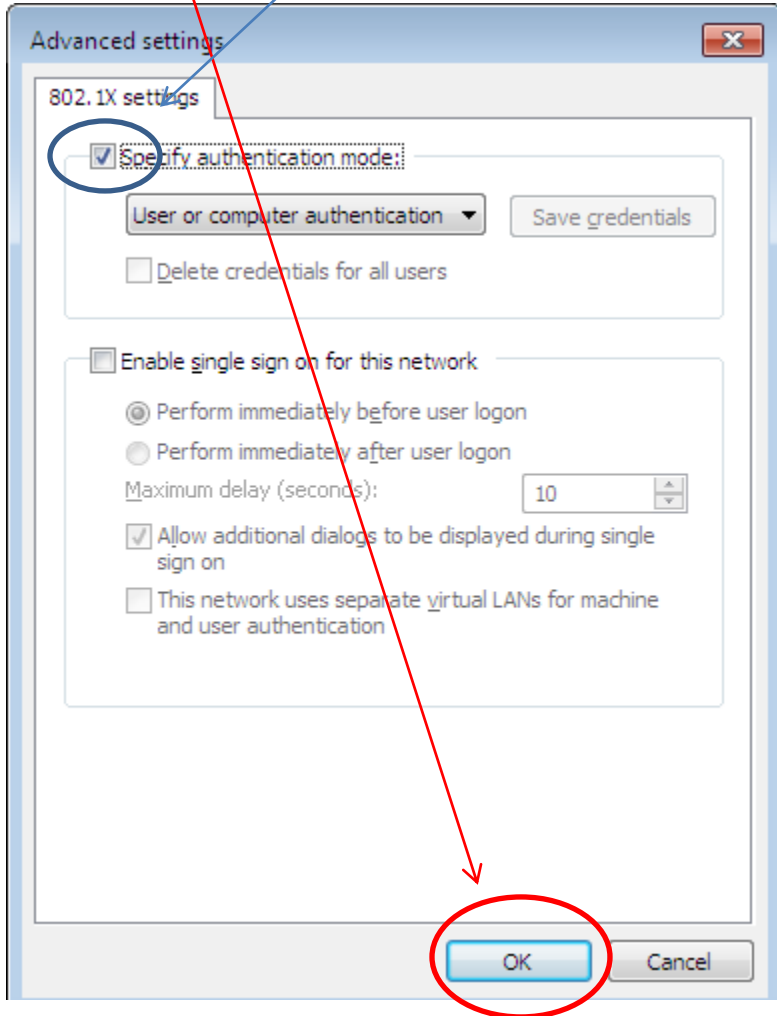
1. Press "security"



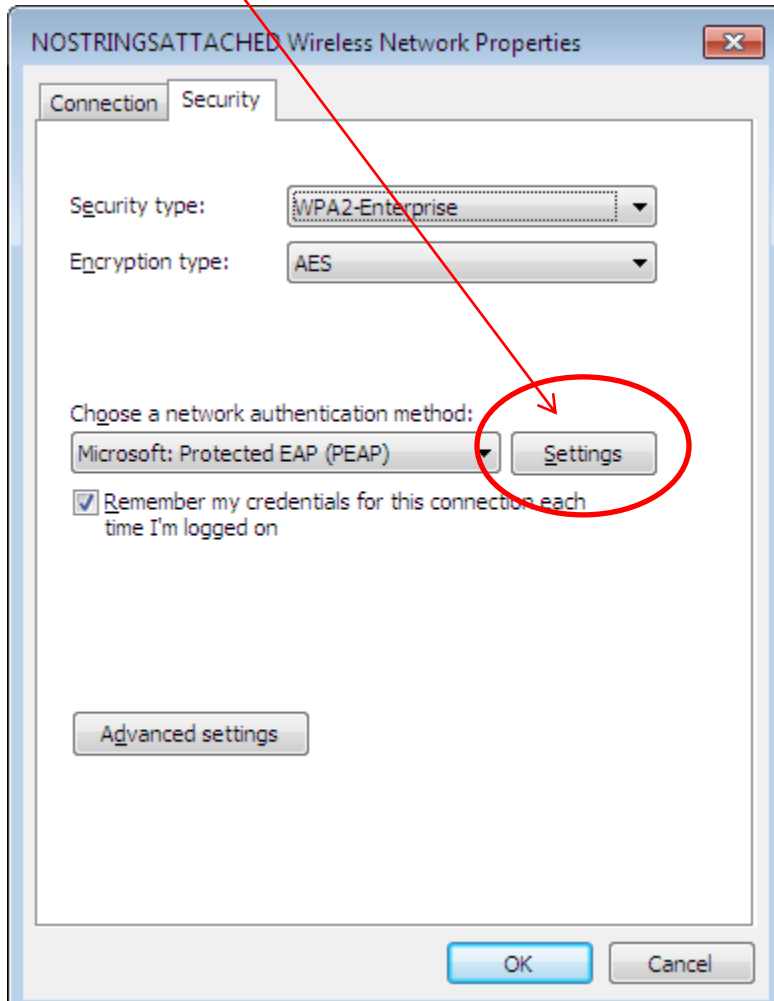
1. Select "advanced settings"



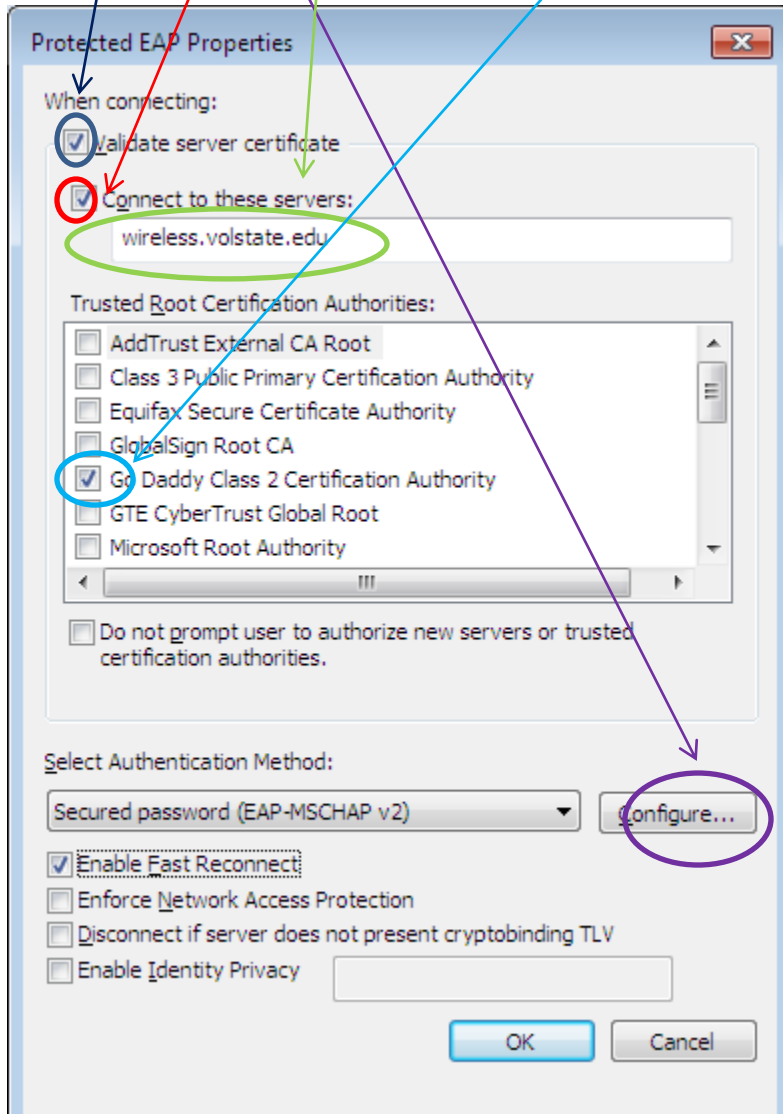
1. Check "specify authentication mode"
2. Press "ok"



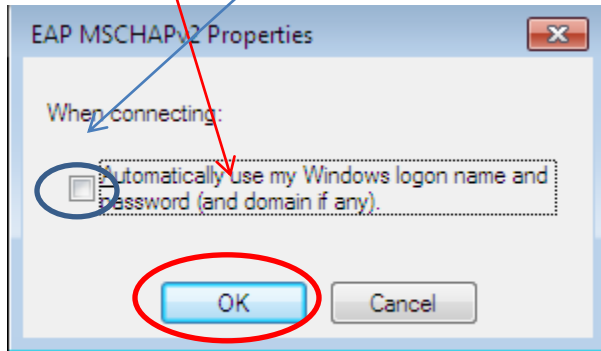
1. Select "settings"



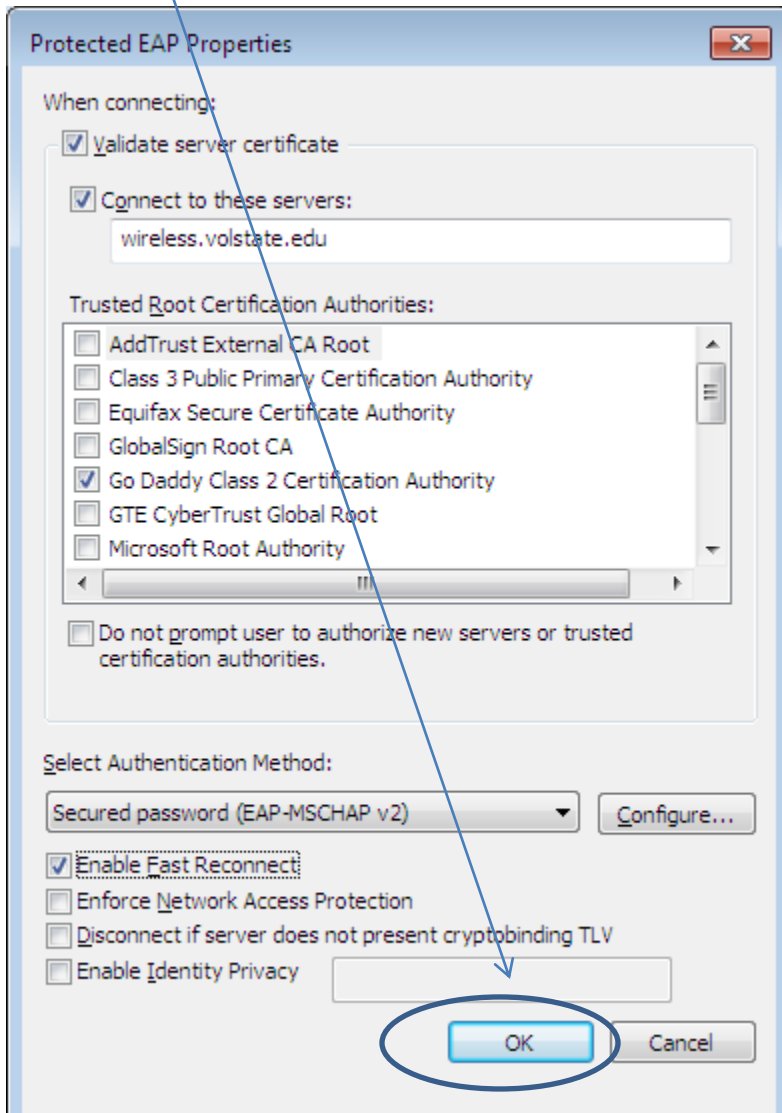
1. Make sure "validate server certificate" is checked
2. Check "connect to these servers"
3. Type wireless.volstate.edu
4. Check "Go Daddy Class 2 Ceertification Authority"
5. Press "configure"



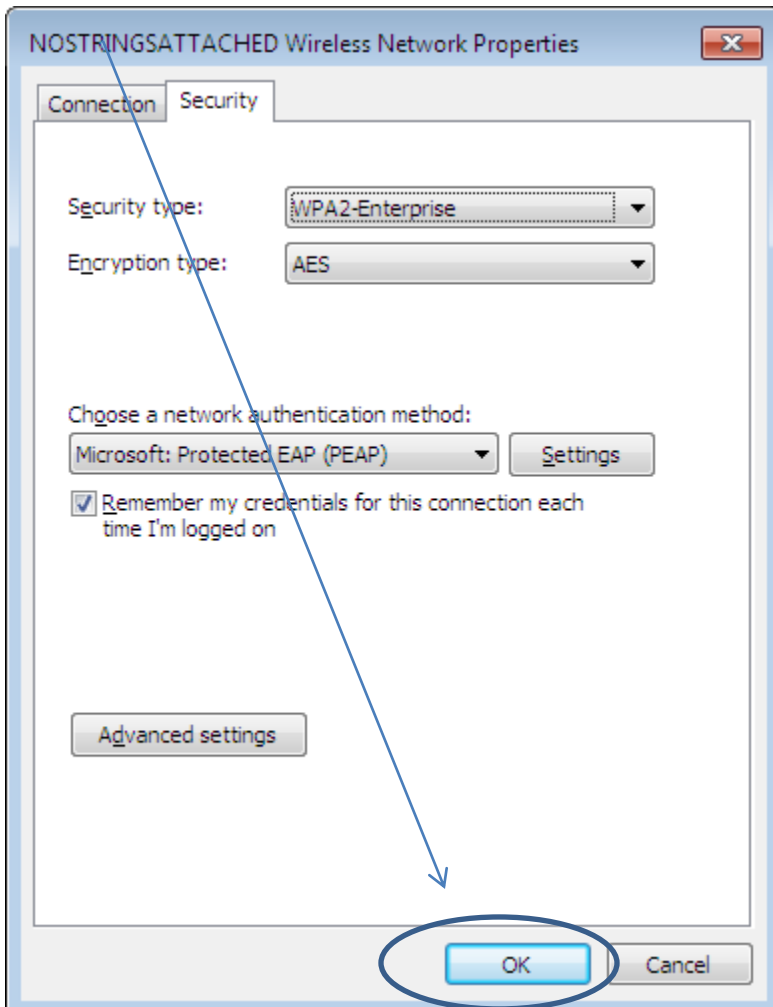
1. Make sure "Automatically use my Windows Logon name and password" is not checked
2. Press "ok"



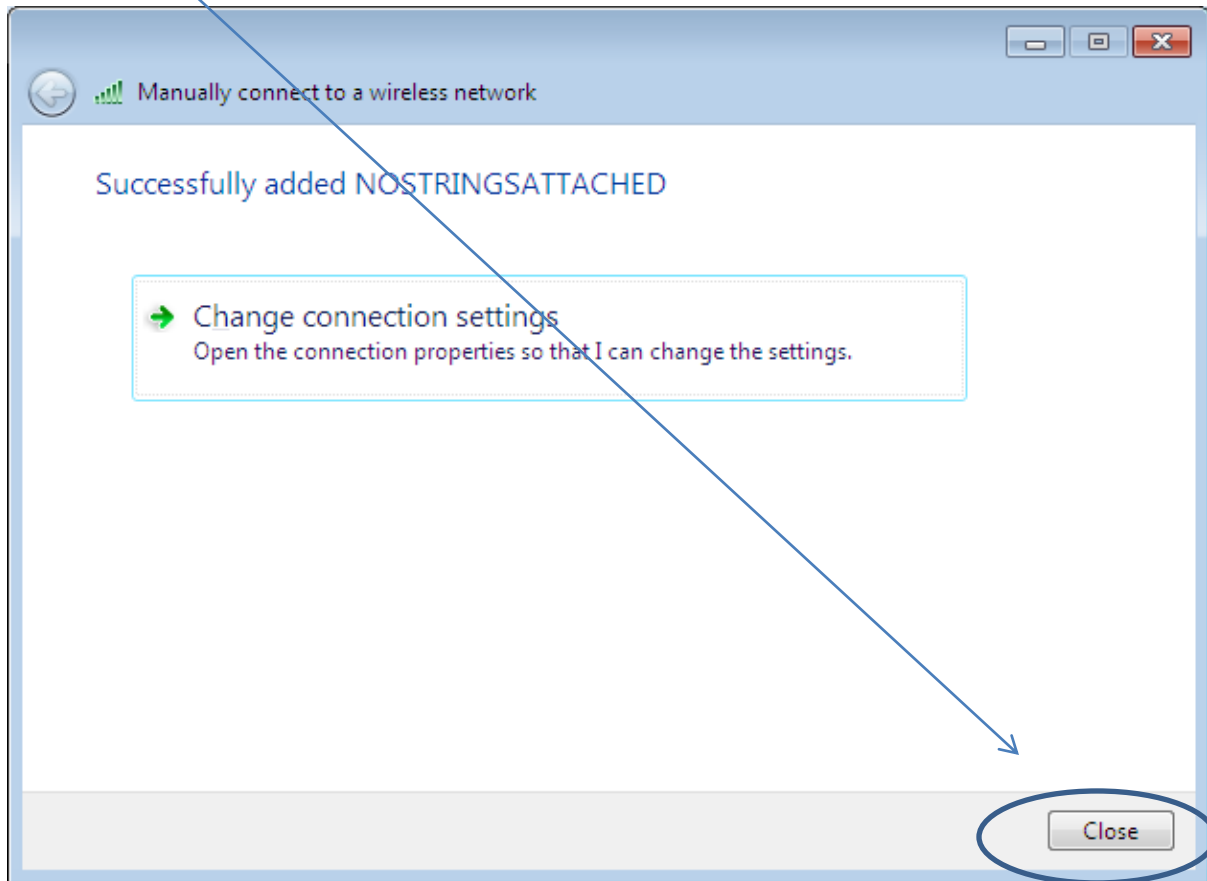
1. Press "OK"



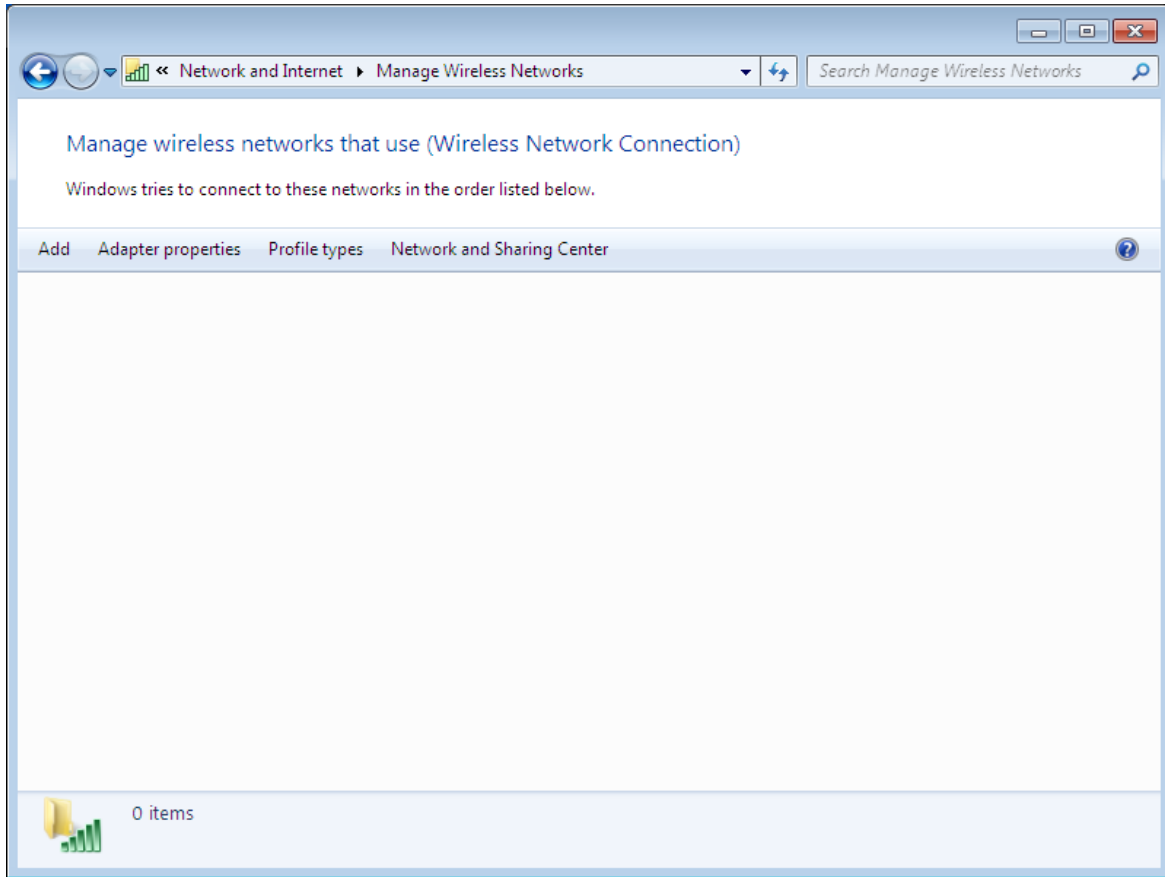
1. Press "OK"



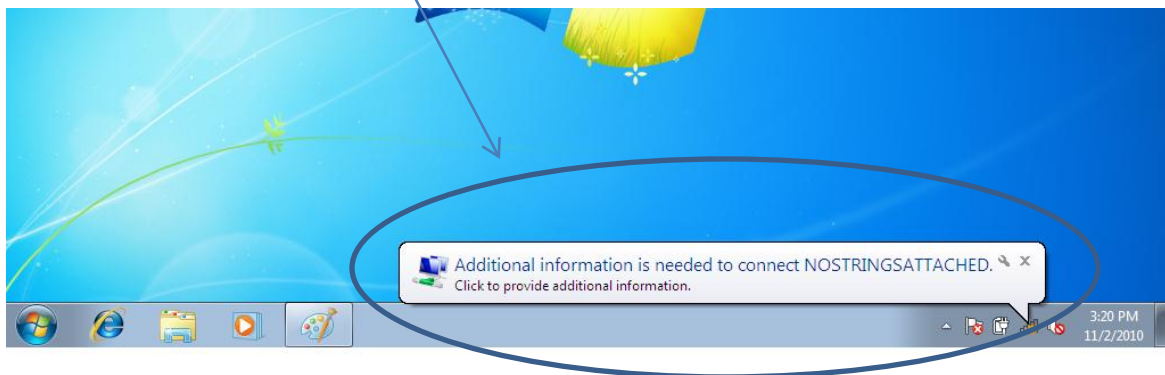
1. Press "OK"



1. Close this screen



1. Select "Additional information is needed to connect NOSTRINGSATTACHED"



1. Enter your Volstate User name
2. Enter your Volstate password

