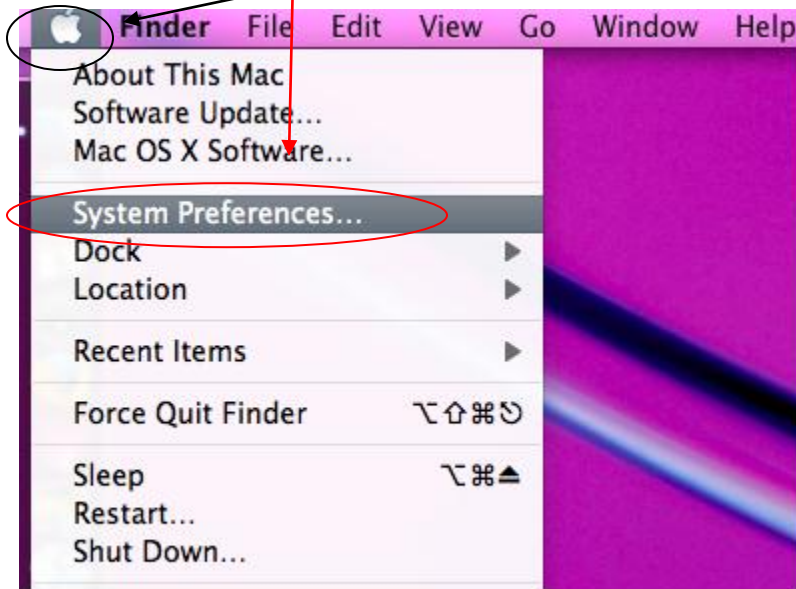
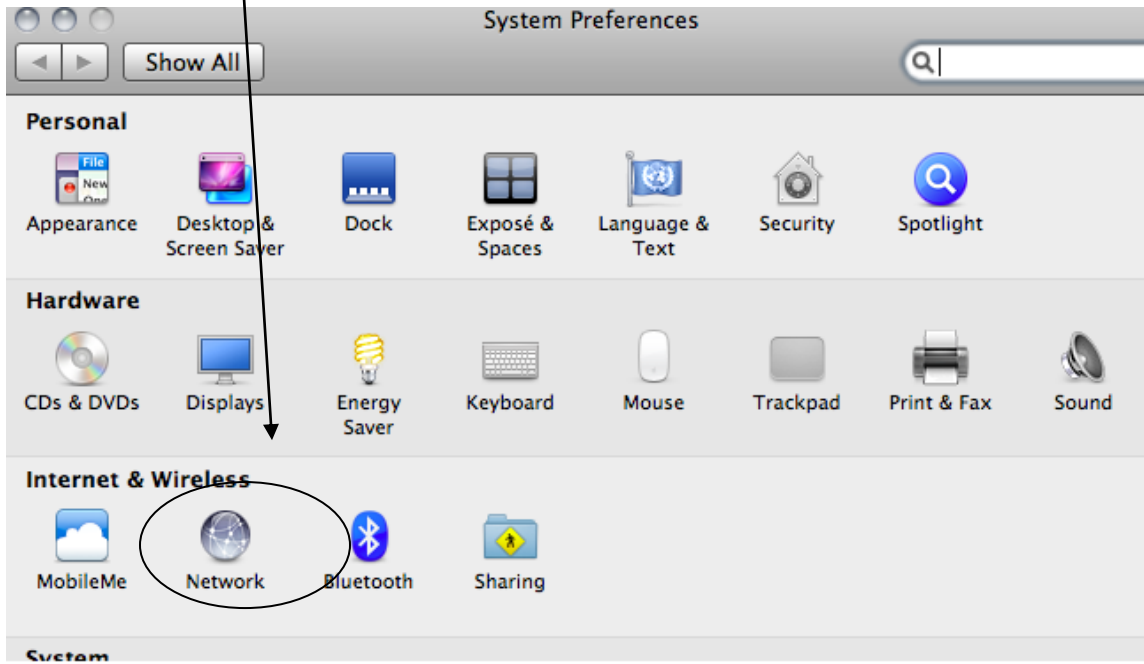


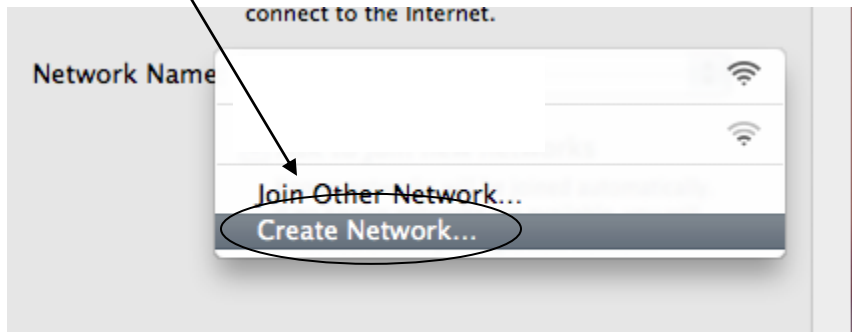
1. Click the apple icon to get started.
2. 2 Click "System Preferences"



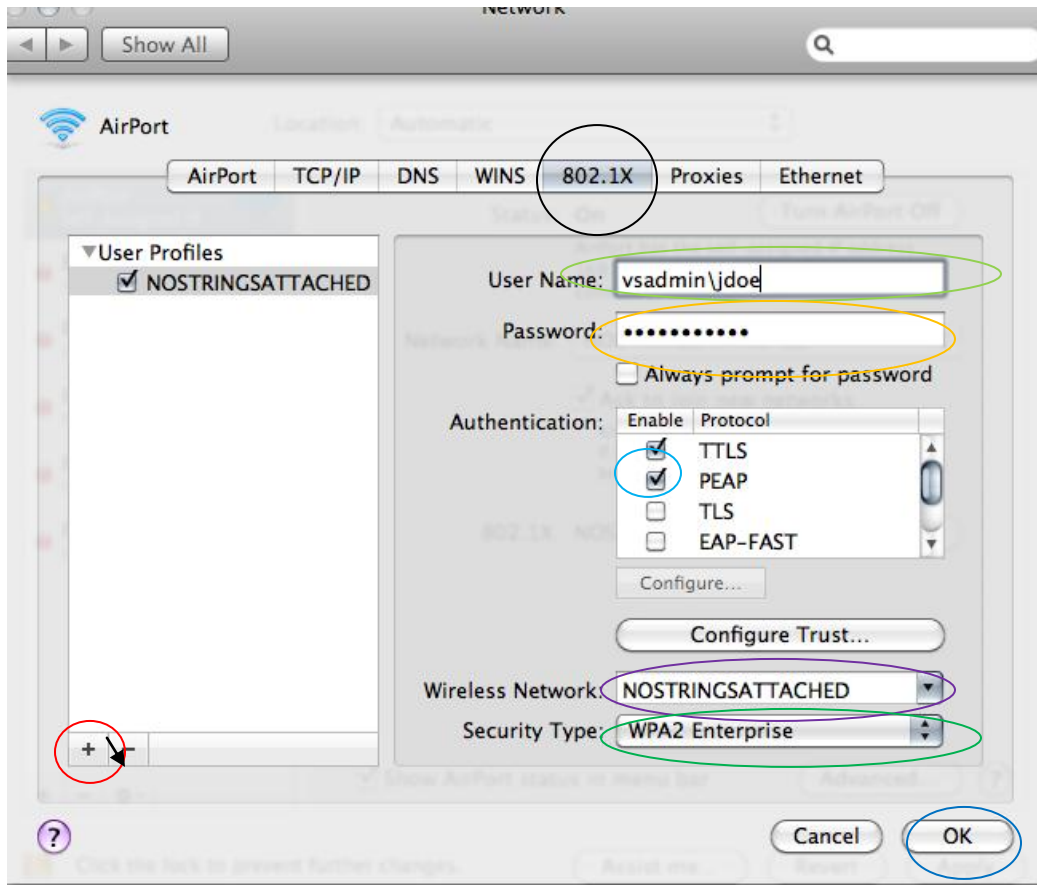
1. Click "Network"



1. Click "Create Network"



1. Click "802.1x"
2. Click the "+"
3. Type NOSTRINGSATTACHED
4. Type your volstate username
5. Type your volstate password
6. Make sure there is a check by "PEAP"
7. Select "NOSTRINGSATTACHED"
8. Select "WPA2 Enterprise"
9. Click "OK"



1. Click "Continue"
2. Click "Apply"

